

# Deep Brain Stimulation (DBS): A Miracle of Biotechnology

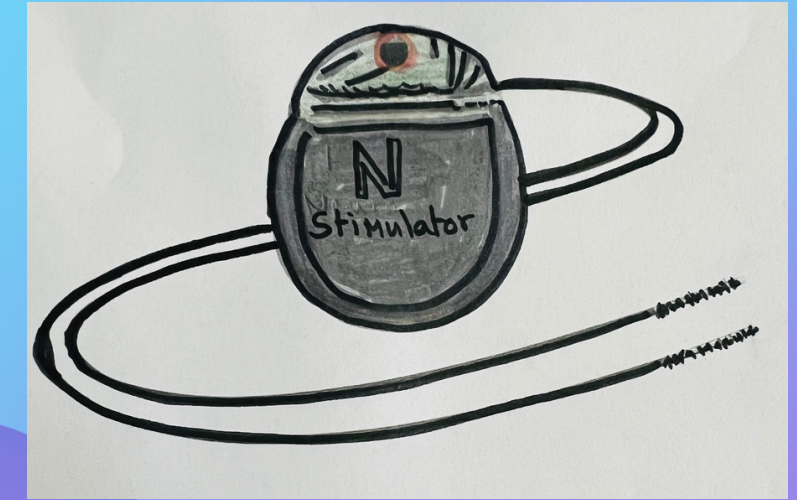
## CANDIDATES FOR DBS



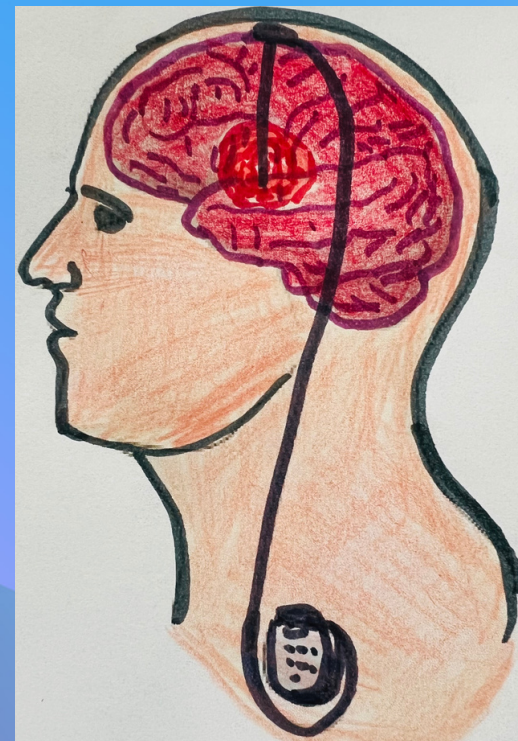
PD patients with movement disorder symptoms that are not adequately controlled by medication

DBS is a neurosurgical procedure to treat movement disorders associated with Parkinson's Disease (PD), essential tremor, dystonia, and other neurological conditions

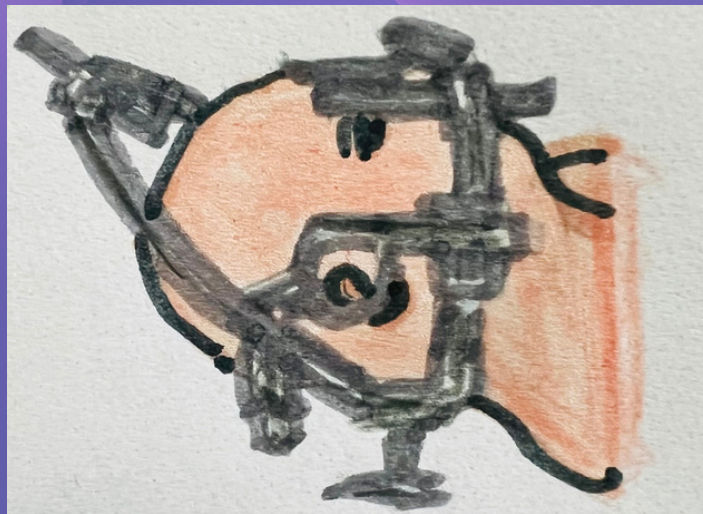
## DEVICES FOR DBS



DBS surgery consists of two parts: implanting the leads and then placing the neurostimulator, under the skin of the patient's chest

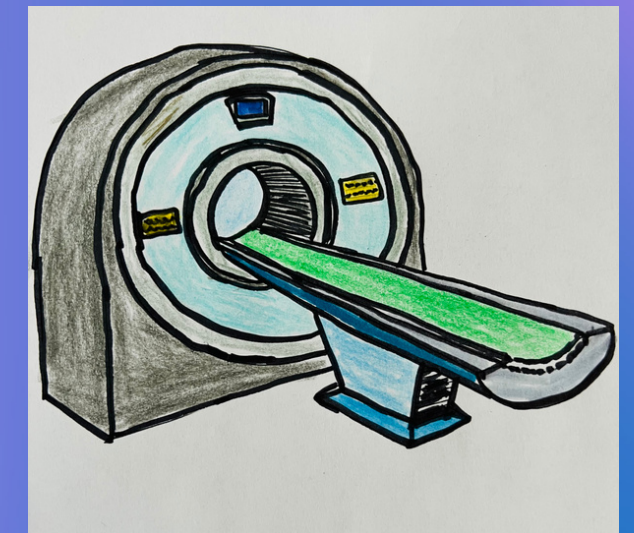


## STEREOTACTIC DBS SURGERY



A stereotactic frame stabilizes the patient's head and provides coordinates to help the surgeon guide the lead to the subthalamic nucleus (STN) in the brain

## IMAGE-GUIDED DBS SURGERY



Interventional MRI (iMRI) or CT scan enables the surgeon to use images of the patient's brain to guide the lead to its precise target in the brain